



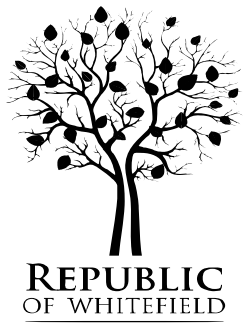
(Select Tower)

Tower A		Tower B		Tower C		Tower D		Tower E		Tower F		Tower G
Tower H		Tower I		Tower J		Tower K		Tower L		Tower M		Tower N



TOWER A

- Level 2 Painting in Progress
- Level 16 Flooring in Progress





TOWER B

- Level 10 Paint in Progress
- Level 16 Flooring in Progress

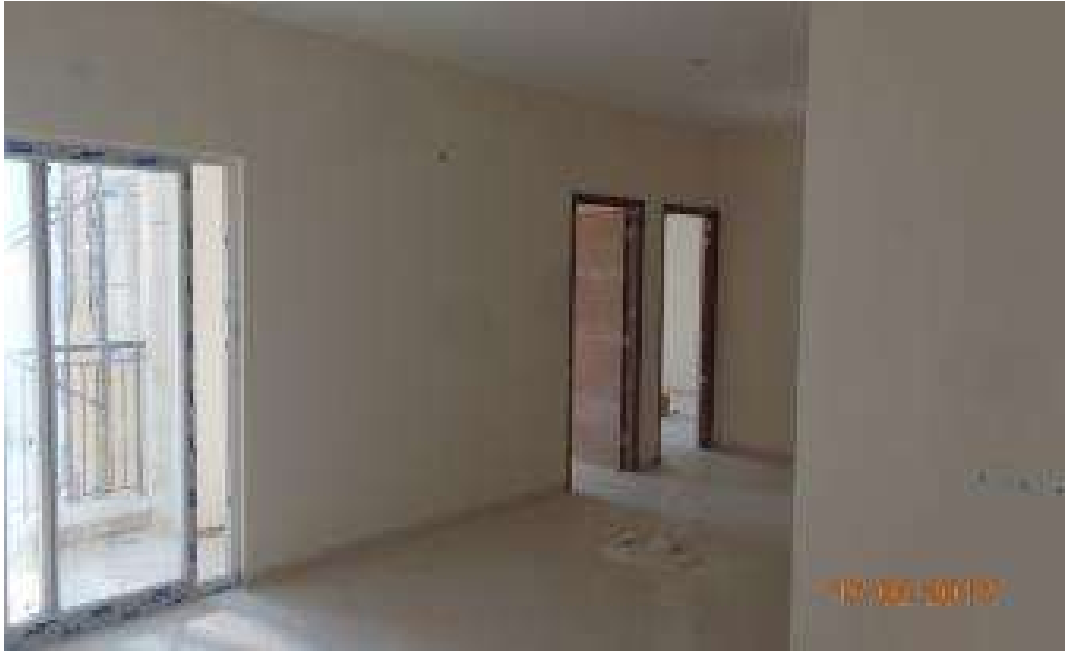




TOWER C

- Level 15 Kitchen in Progress
- Above Terrace Work in Progress





TOWER D

- Level 10 Painting in Progress
- Level 15 Putty in Progress

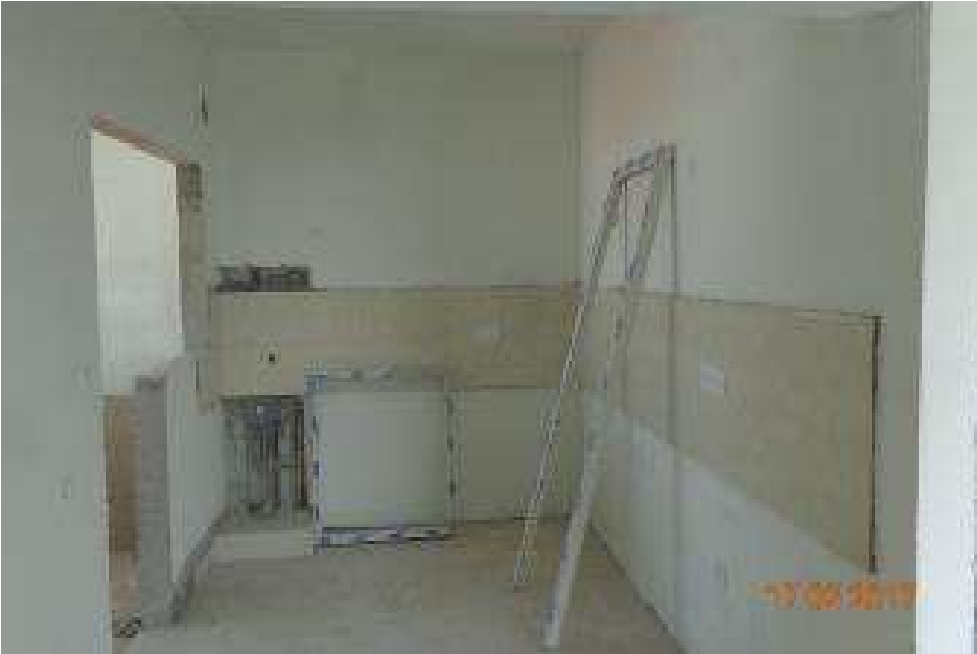




TOWER E

- Level 15 Paint in Progress
- Level 16 Kitchen Dado Completed





TOWER F

- Level 14 Paint in Progress
- Level 16 Kitchen Dado Completed





TOWER G

- Level 14 Kitchen Dado in Progress
- Level 6 Paint in Progress





TOWER H

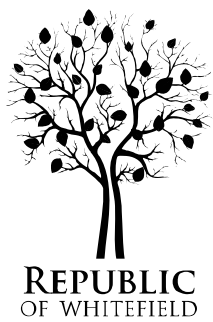
- Level 19 Roof Completed
- Level 20 Roof in Progress





TOWER J

- Upper Basement Work Completed





TOWER K

- Level 12 Flooring in Progress
- Level 8 Kitchen Dado in Progress





TOWER L

- Level 11 Roof Completed
- Level 12 Roof in Progress





TOWER M

- Level 7 Flooring in Progress
- Level 21 Roof in Progress





TOWER N

- Level 4 Flooring in Progress
- Level 18 Roof in Progress



PODIUM:

- 1. Tower K,J&H North Podium
- 2. Tower G,F Podium Area
- 3. Podium Level of C,D&E
- 4. Tower H,J&K South Podium Area



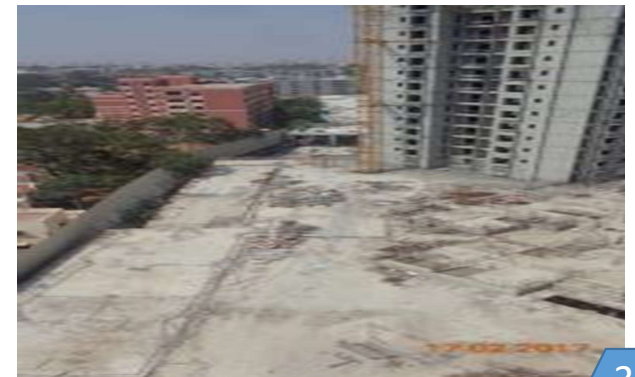
1



2



4



3



Thanks

Team CRM

Contact : crm@row.co.in , 1800 419 3366



DivyaSree Times

PERKS OF HAVING YOUR FRIENDS AS NEIGHBOURS AT REPUBLIC OF WHITEFIELD.

Thank you for being part of Republic of Whitefield family. We are sure your experience with us has been delightful and you would love to share it with your dear ones. So here's the opportunity to share the bounty of living in a Republic of Whitefield community.

Refer your friend and avail the following:

- 1. On successful closure of a referral, the existing client will be eligible for 1% payout on the base value of the unit.
- 2. On successful closure of 2nd referral, the existing client will be eligible for 1.5% payout on the base value of the unit.
- 3. On successful closure of 3rd referral, the existing client will be eligible for 2% payout on the base value of the unit.

Contact :

Email : srinath.t@divyasree.com

Phone : 7760021649