

(Select Tower)

Tower A | Tower B | Tower C | Tower D | Tower E | Tower F | Tower G

Tower H | Tower I | Tower J | Tower K | Tower L | Tower M | Tower N



TOWER A : Shuttering works in Progress for Level 4 Roof and Club House Slab



TOWER B : Level 12 Roof Completed. Level 14 Roof Reinforcement and Shuttering Works in Progress



TOWER C & D : Terrace Works in Progress



TOWER E : Level 16 Terrace work and Toilet Works in Progress



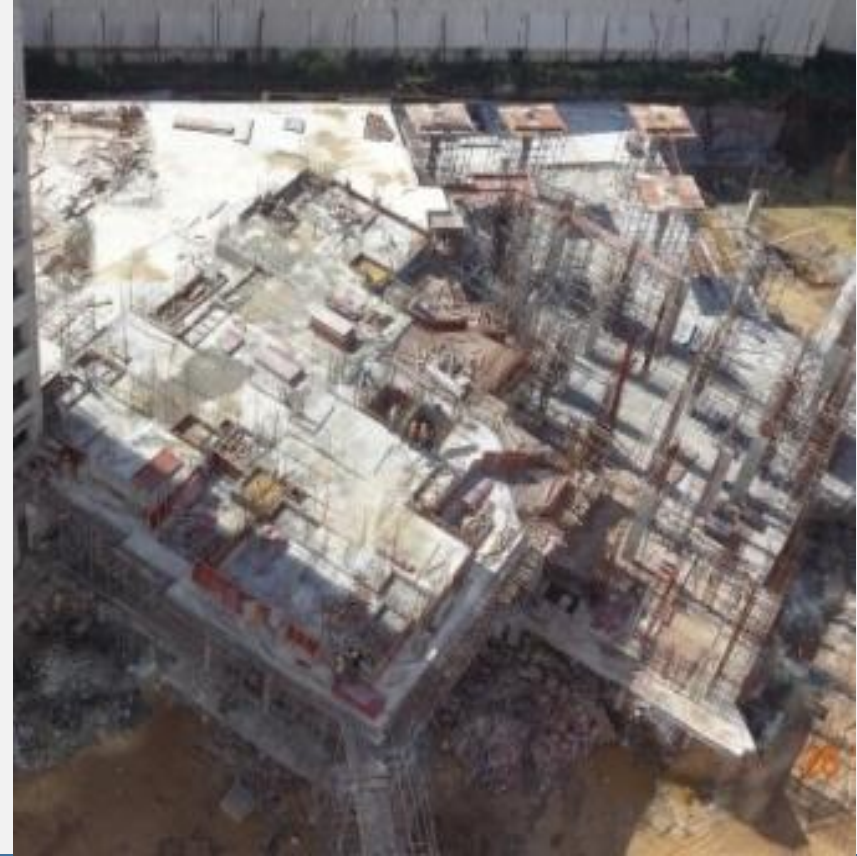
TOWER F : Structure Completed and Toilet Water Proofing in Level 15 Works in Progress.



TOWER G : Level 9 Works in Progress



TOWER H : Upper Basement Column Casting Works in Progress.



TOWER J : Upper Basement Works in Progress .





TOWER K : Level 10 Roof Completed

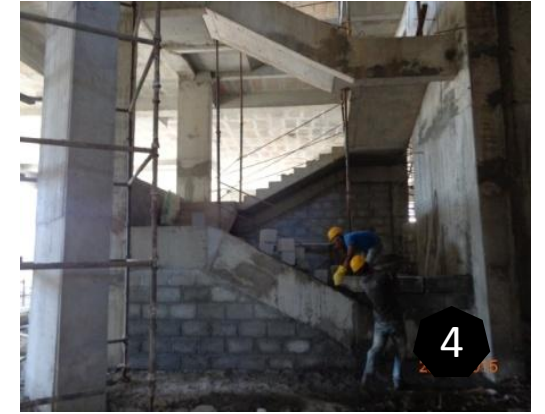




TOWER L & N : Lower Basement Column Casting Works in Progress



TOWER M: Lower Basement Column Casting and Slab Shuttering Works in Progress



PODIUM:

1. Podium footing works in progress.
2. Tower J ,K & F podium area in progress.
3. Tower L Podium in progress.
4. Tower A & B upper basement block work in progress
5. Tower E podium reinforcement completed
6. Tower A podium reinforcement completed



Thanks

Team CRM

Contact : crm@row.co.in , 1800 419 3366



DivyaSree Times



**The Carnival is back!
This time it's bigger, better and brighter!**

Watch this space for updates.