

(Select Tower)

Tower A | Tower B | Tower C | Tower D | Tower E | Tower F | Tower G

Tower H | Tower I | Tower J | Tower K | Tower L | Tower M | Tower N



TOWER A

- Level 9 Roof Completed
- Level 10 Roof Shuttering and Reinforcement works in Progress



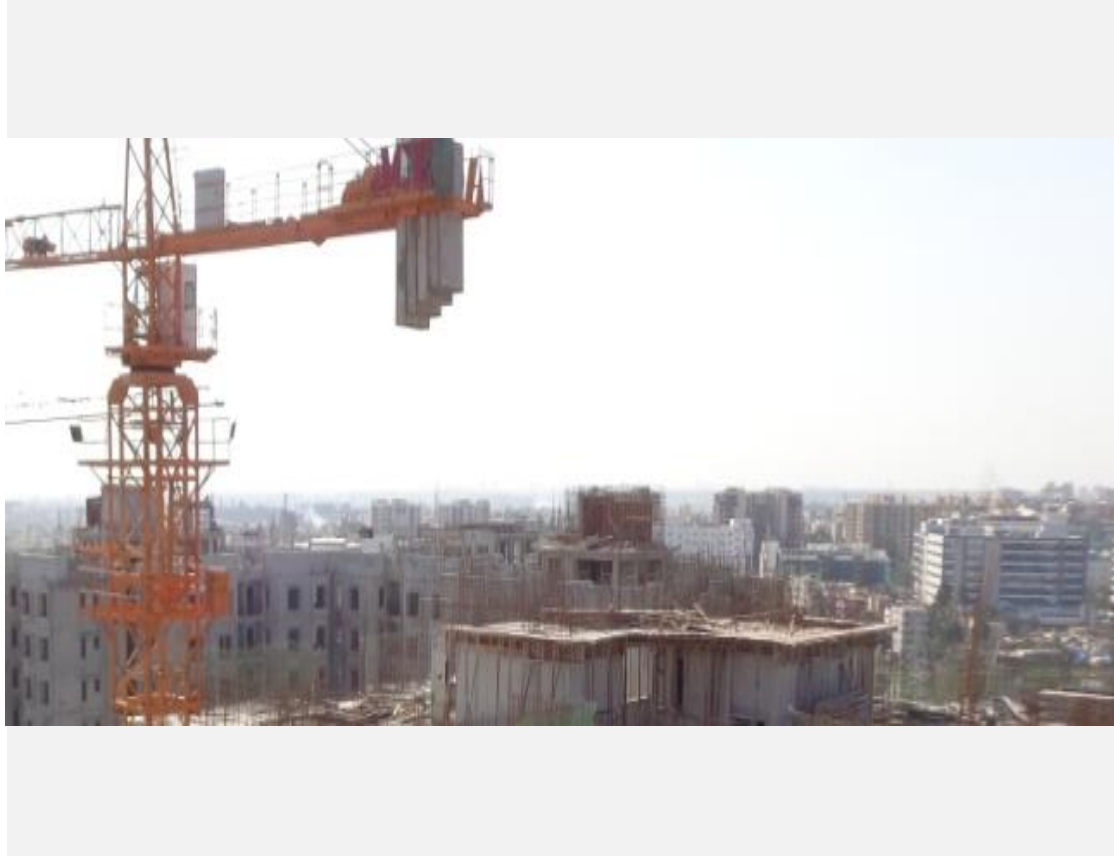
TOWER B

Terrace Works and Level 8 Toilet Works in Progress





TOWER C
Blockwork and Internal Plastering Works in Progress



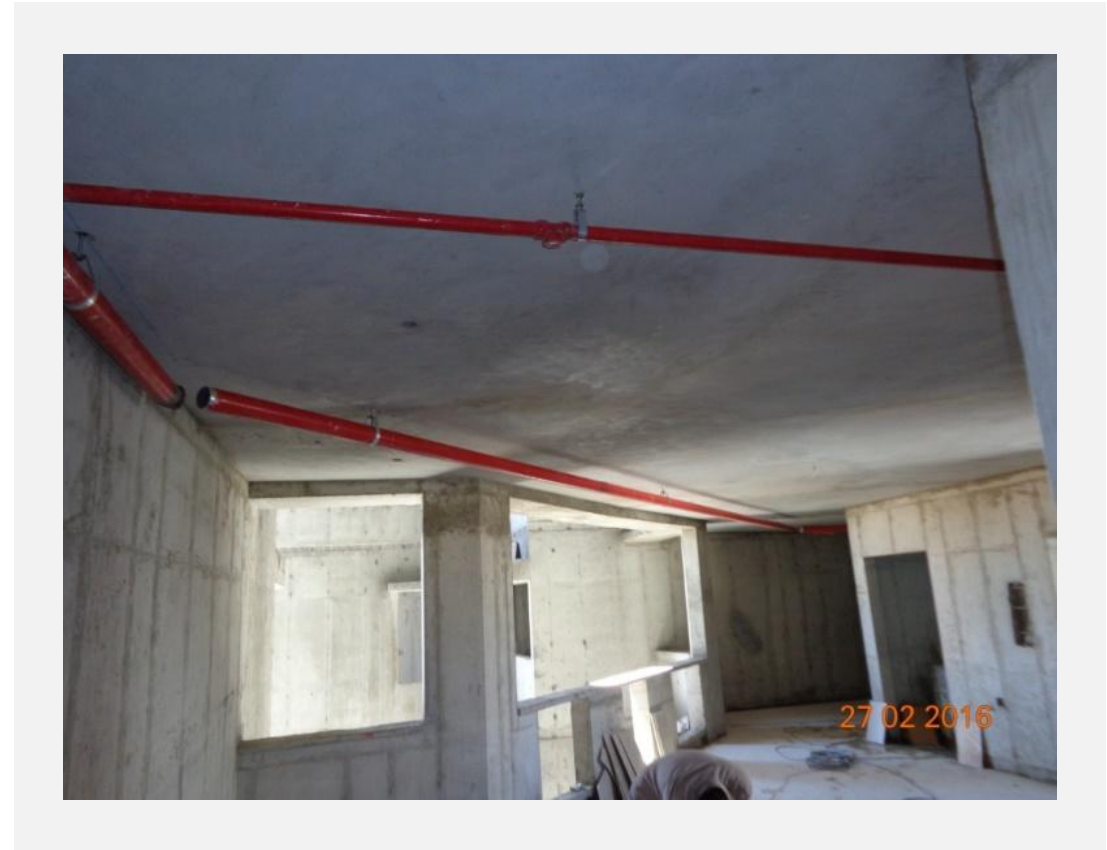
TOWER D

- Level 5 Flooring Works of Living , Utility & Balcony In Progress
 - Terrace Works In Progress



TOWER E

- Level 4 Balcony Flooring completed & Utility Flooring Works in Progress
 - Level 5 Flooring Works In Progress



TOWER F

- Level 3 of Fire Safety Sprinkler Installation In Progress
 - Level 4 & 5 Flooring Works are In Progress
 - Level 4 Lobby Flooring Works In progress

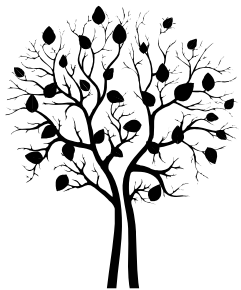


TOWER G
Level 16 Roof Completed



TOWER H

Upper Basement Slab Shuttering & Reinforcement Works in Progress



REPUBLIC
OF WHITEFIELD



TOWER J

- Upper Basement Roof Completed
 - Level 1 Works in Progress



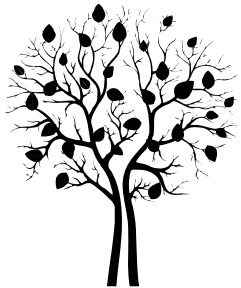
TOWER K

- Level 18 Roof Completed
- Level 19 Roof Shuttering & Reinforcement Works in Progress



TOWER L

Lower Basement Slab Shuttering Works in Progress



REPUBLIC
OF WHITEFIELD



TOWER M

Level 1 Roof Shuttering & Reinforcement Works in Progress



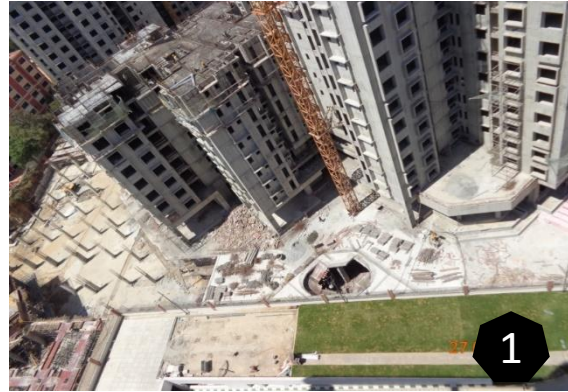


TOWER N

Upper Basement Roof Shuttering Works in Progress



PODIUM:



- Tower A & G podium slab shuttering, reinforcement & concrete in progress.
- Tower J & K podium area slab shuttering, reinforcement & concrete in progress.
- Tower L, M & N south side podium slab shuttering in progress.
- Podium north side slab shuttering, reinforcement & concrete in progress.
- Tower F Podium area slab shuttering, reinforcement & concrete in progress.



Thanks

Team CRM

Contact : crm@row.co.in , 1800 419 3366



**TO OWN A PIECE OF BANGALORE'S MOST ALLURING LOCATION,
VISIT US AT STALL NO: 10 OF THE HINDU NORTH BANGALORE PROPERTY EXHIBITION**

DATE: 11TH, 12TH AND 13TH MARCH

VENUE: WHITE ORCHID CONVENTION CENTRE, HEBBAL